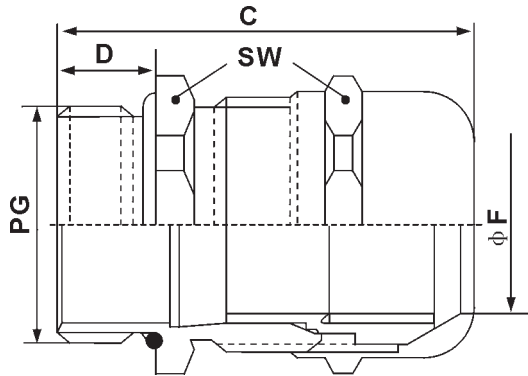


PG connection thread

DASCP

This product is manufactured from high quality nickel-plated brass. It is intended for areas where safety and stability is important. Such areas may include manufacturing of machinery and the manufactured machinery itself, measuring and controlling devices, and medical equipments. A permanently locked plastic clamp prevents distortion.



Technical Data	Temperature range	Protection class	Material
DASCP	-30°C to +100°C	IP 68-5 bar	Body : Brass , nickel-plated Insert : Polyamide Sealing Ring : Neoprene O-ring : perbunan

Seal hole	Threaded Entry PG	Cat. No	Thread O.D. PG	Panel Mounting Hole	Thread Length D	Spanner Size A & F	Clamping Rang mm	Wrench Size mm	C mm
	PG 7	DASCPNN-7	12.5	12.5-12.8	5	17/15	2-6.5	14	25
	PG 9	DASCPNN-9	15.2	15.2-15.5	6	22/19	3-8	17	29
	PG 11	DASCPNN-11	18.6	18.6-18.9	6	24/22	4-10	20	32
	PG 13.5	DASCPNN-13.5	20.4	20.4-20.7	6.5	27/24	5-12	22	34
	PG 16	DASCPNN-16	22.5	22.5-22.8	6.5	30/27	8-14	24	35
	PG 21	DASCPNN-21	28.3	28.3-28.7	7	36/33	11-18	30	40
	PG 29	DASCPNN-29	37	37-37.4	8	46/41	16-25	40	48
	PG 36	DASCPNN-36	47	47-47.4	15	57/50	19-32	50	62
	PG 42	DASCPNN-42	54	54-54.4	15	64/62	28-38	57	62
PG 48	DASCPNN-48	59.3	59.3-59.7	15	70/65	34-44	64	62	

Seal hole	Threaded Entry PG	Cat. No	Cable Range φ	Thread O.D. PG	Panel Mounting Hole	Thread Length D	Spanner Size A & F	Clamping Rang mm	Wrench Size mm	C mm
	PG 7	DASCPY2D-7	3 - 1.2	12.5	12.5-12.8	5	17/15	2-6.5	14	25
	PG 9	DASCPY2D-9	3.5 - 1.5	15.2	15.2-15.5	6	22/19	3-8	17	29
	PG 11	DASCPY2D-11	3.5 - 1.8	18.6	18.6-18.9	6	24/22	4-10	20	32
	PG 13.5	DASCPY2D-13.5	3.5 - 2	20.4	20.4-20.7	6.5	27/24	5-12	22	34
	PG 16	DASCPY2D-16	4.5 - 2	22.5	22.5-22.8	6.5	30/27	8-14	24	35
	PG 21	DASCPY2D-21	8 - 4	28.3	28.3-28.7	7	36/33	11-18	30	40
	PG 29	DASCPY2D-29	12 - 6	37	37-37.4	8	46/41	16-25	40	48
	PG 36	DASCPY2D-36	15 - 9	47	47-47.4	15	57/50	19-32	50	62
	PG 42	DASCPY2D-42	18 - 15	54	54-54.4	15	64/62	28-38	57	62
PG 48	DASCPY2D-48	22 - 17	59.3	59.3-59.7	15	70/65	34-44	64	62	

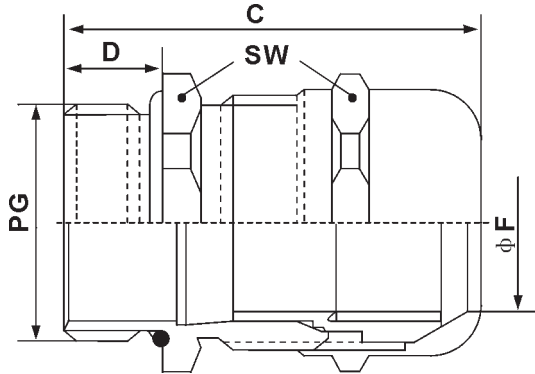
Seal hole	Threaded Entry PG	Cat. No	Cable Range φ	Thread O.D. PG	Panel Mounting Hole	Thread Length D	Spanner Size A & F	Clamping Rang mm	Wrench Size mm	C mm
	PG 7	DASCPY3D-7	2.6 - 1.2	12.5	12.5-12.8	5	17/15	2-6.5	14	25
	PG 9	DASCPY3D-9	3 - 1.5	15.2	15.2-15.5	6	22/19	3-8	17	29
	PG 11	DASCPY3D-11	3.5 - 1.5	18.6	18.6-18.9	6	24/22	4-10	20	32
	PG 13.5	DASCPY3D-13.5	4 - 1.5	20.4	20.4-20.7	6.5	27/24	5-12	22	34
	PG 16	DASCPY3D-16	4 - 2	22.5	22.5-22.8	6.5	30/27	8-14	24	35
	PG 21	DASCPY3D-21	6 - 3	28.3	28.3-28.7	7	36/33	11-18	30	40
	PG 29	DASCPY3D-29	11 - 5	37	37-37.4	8	46/41	16-25	40	48
	PG 36	DASCPY3D-36	15 - 9	47	47-47.4	15	57/50	19-32	50	62
	PG 42	DASCPY3D-42	17 - 13	54	54-54.4	15	64/62	28-38	57	62
PG 48	DASCPY3D-48	19 - 15	59.3	59.3-59.7	15	70/65	34-44	64	62	

Brass cable glands

PG connection thread

DASCP

This product is manufactured from high quality nickel-plated brass. It is intended for areas where safety and stability is important. Such areas may include manufacturing of machinery and the manufactured machinery itself, measuring and controlling devices, and medical equipments. A permanently locked plastic clamp prevents distortion.



Technical Data	Temperature range	Protection class	Material
DASCP	-30°C to +100°C	IP 68-5 bar	Body : Brass , nickel-plated Insert : Polyamide Sealing Ring : Neoprene O-ring : perbunan

Seal hole	Threaded Entry PG	Cat . No	Cable Range φ	Thread O.D. PG	Panel Mounting Hole	Thread Length D	Spanner Size A & F	Clamping Rang mm	Wrench Size mm	C mm
	PG 7	DASCPY4D-7	2.3 - 1	12.5	12.5-12.8	5	17/15	2-6.5	14	25
	PG 9	DASCPY4D-9	3 - 1	15.2	15.2-15.5	6	22/19	3-8	17	29
	PG 11	DASCPY4D-11	3 - 1.5	18.6	18.6-18.9	6	24/22	4-10	20	32
	PG 13.5	DASCPY4D-13.5	3.5 - 1.5	20.4	20.4-20.7	6.5	27/24	5-12	22	34
	PG 16	DASCPY4D-16	4 - 2	22.5	22.5-22.8	6.5	30/27	8-14	24	35
	PG 21	DASCPY4D-21	8 - 4	28.3	28.3-28.7	7	36/33	11-18	30	40
	PG 29	DASCPY4D-29	11 - 6	37	37-37.4	8	46/41	16-25	40	48
	PG 36	DASCPY4D-36	13 - 7	47	47-47.4	15	57/50	19-32	50	62
	PG 42	DASCPY4D-42	18 - 12	54	54-54.4	15	64/62	28-38	57	62
PG 48	DASCPY4D-48	20 - 17	59.3	59.3-59.7	15	70/65	34-44	64	62	

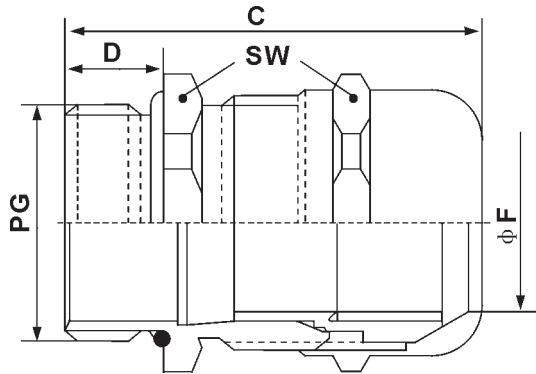
Seal hole	Threaded Entry PG	Cat . No	Cable Range φ	Thread O.D. PG	Panel Mounting Hole	Thread Length D	Spanner Size A & F	Clamping Rang mm	Wrench Size mm	C mm
	PG 7	DASCPY5D-7	2 - 1	12.5	12.5-12.8	5	17/15	2-6.5	14	25
	PG 9	DASCPY5D-9	2.5 - 1	15.2	15.2-15.5	6	22/19	3-8	17	29
	PG 11	DASCPY5D-11	2.5-1.5	18.6	18.6-18.9	6	24/22	4-10	20	32
	PG 13.5	DASCPY5D-13.5	3 - 1.5	20.4	20.4-20.7	6.5	27/24	5-12	22	34
	PG 16	DASCPY5D-16	4 - 2	22.5	22.5-22.8	6.5	30/27	8-14	24	35
	PG 21	DASCPY5D-21	4.5 - 2	28.3	28.3-28.7	7	36/33	11-18	30	40
	PG 29	DASCPY5D-29	10 - 3.5	37	37-37.4	8	46/41	16-25	40	48
	PG 36	DASCPY5D-36	13 - 7	47	47-47.4	15	57/50	19-32	50	62
	PG 42	DASCPY5D-42	15 - 8	54	54-54.4	15	64/62	28-38	57	62
PG 48	DASCPY5D-48	17 - 13	59.3	59.3-59.7	15	70/65	34-44	64	62	

Seal hole	Threaded Entry PG	Cat . No	Cable Range φ	Thread O.D. PG	Panel Mounting Hole	Thread Length D	Spanner Size A & F	Clamping Rang mm	Wrench Size mm	C mm
	PG 7	DASCPY6D-7	1.8 - 1	12.5	12.5-12.8	5	17/15	2-6.5	14	25
	PG 9	DASCPY6D-9	2 - 1	15.2	15.2-15.5	6	22/19	3-8	17	29
	PG 11	DASCPY6D-11	2.5 - 1.2	18.6	18.6-18.9	6	24/22	4-10	20	32
	PG 13.5	DASCPY6D-13.5	3 - 1.5	20.4	20.4-20.7	6.5	27/24	5-12	22	34
	PG 16	DASCPY6D-16	4 - 2	22.5	22.5-22.8	6.5	30/27	8-14	24	35
	PG 21	DASCPY6D-21	7 - 3	28.3	28.3-28.7	7	36/33	11-18	30	40
	PG 29	DASCPY6D-29	9 - 5	37	37-37.4	8	46/41	16-25	40	48
	PG 36	DASCPY6D-36	11 - 7	47	47-47.4	15	57/50	19-32	50	62
	PG 42	DASCPY6D-42	13 - 9	54	54-54.4	15	64/62	28-38	57	62
PG 48	DASCPY6D-48	15 - 11	59.3	59.3-59.7	15	70/65	34-44	64	62	

PG connection thread

DASCP

This product is manufactured from high quality nickel-plated brass. It is intended for areas where safety and stability is important. Such areas may include manufacturing of machinery and the manufactured machinery itself, measuring and controlling devices, and medical equipments. A permanently locked plastic clamp prevents distortion.



Technical Data	Temperature range	Protection class	Material
DASCP	-30°C to +100°C	IP 68-5 bar	Body : Brass , nickel-plated Insert : Polyamide Sealing Ring : Neoprene O-ring : perbunan

Seal hole	Threaded Entry PG	Cat . No	Cable Range φ	Thread O.D. PG	Panel Mounting Hole	Thread Length D	Spanner Size A & F	Clamping Rang mm	Wrench Size mm	C mm
	PG 7	DASCPY7D-7	2 - 1	12.5	12.5-12.8	5	17/15	2-6.5	14	25
	PG 9	DASCPY7D-9	2.4 - 1	15.2	15.2-15.5	6	22/19	3-8	17	29
	PG 11	DASCPY7D-11	3 - 1	18.6	18.6-18.9	6	24/22	4-10	20	32
	PG 13.5	DASCPY7D-13.5	3 - 1.5	20.4	20.4-20.7	6.5	27/24	5-12	22	34
	PG 16	DASCPY7D-16	3 - 2	22.5	22.5-22.8	6.5	30/27	8-14	24	35
	PG 21	DASCPY7D-21	4 - 2	28.3	28.3-28.7	7	36/33	11-18	30	40
	PG 29	DASCPY7D-29	6 - 3	37	37-37.4	8	46/41	16-25	40	48
	PG 36	DASCPY7D-36	7 - 5	47	47-47.4	15	57/50	19-32	50	62
	PG 42	DASCPY7D-42	8 - 5	54	54-54.4	15	64/62	28-38	57	62
	PG 48	DASCPY7D-48	9 - 6	59.3	59.3-59.7	15	70/65	34-44	64	62

Seal hole	Threaded Entry PG	Cat . No	Cable Range φ	Thread O.D. PG	Panel Mounting Hole	Thread Length D	Spanner Size A & F	Clamping Rang mm	Wrench Size mm	C mm
	PG 7	DASCPY8D-7	1.8 - 0.8	12.5	12.5-12.8	5	17/15	2-6.5	14	25
	PG 9	DASCPY8D-9	2 - 1	15.2	15.2-15.5	6	22/19	3-8	17	29
	PG 11	DASCPY8D-11	2.5 - 1	18.6	18.6-18.9	6	24/22	4-10	20	32
	PG 13.5	DASCPY8D-13.5	2.8 - 1.5	20.4	20.4-20.7	6.5	27/24	5-12	22	34
	PG 16	DASCPY8D-16	3 - 2	22.5	22.5-22.8	6.5	30/27	8-14	24	35
	PG 21	DASCPY8D-21	3.5 - 1.5	28.3	28.3-28.7	7	36/33	11-18	30	40
	PG 29	DASCPY8D-29	7 - 3	37	37-37.4	8	46/41	16-25	40	48
	PG 36	DASCPY8D-36	7.5 - 5	47	47-47.4	15	57/50	19-32	50	62
	PG 42	DASCPY8D-42	8 - 5	54	54-54.4	15	64/62	28-38	57	62
	PG 48	DASCPY8D-48	8 - 6	59.3	59.3-59.7	15	70/65	34-44	64	62

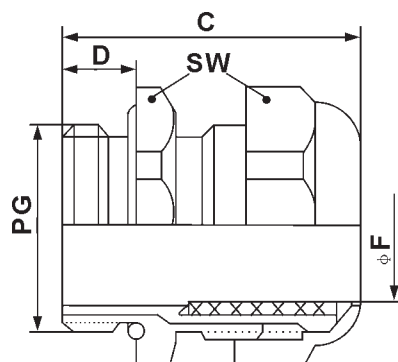
Seal hole	Threaded Entry PG	Cat . No	Cable Range φ	Thread O.D. PG	Panel Mounting Hole	Thread Length D	Spanner Size A & F	Clamping Rang mm	Wrench Size mm	C mm
	PG 7	DASCPLD-7	3 - 1.2	12.5	12.5-12.8	5	17/15	2-6.5	14	25
	PG 9	DASCPLD-9	3 - 1.5	15.2	15.2-15.5	6	22/19	3-8	17	29
	PG 11	DASCPLD-11	3 - 2	18.6	18.6-18.9	6	24/22	4-10	20	32
	PG 13.5	DASCPLD-13.5	3.5 - 2	20.4	20.4-20.7	6.5	27/24	5-12	22	34
	PG 16	DASCPLD-16	4 - 2	22.5	22.5-22.8	6.5	30/27	8-14	24	35
	PG 21	DASCPLD-21	5 - 2	28.3	28.3-28.7	7	36/33	11-18	30	40
	PG 29	DASCPLD-29	6.5 - 4	37	37-37.4	8	46/41	16-25	40	48
	PG 36	DASCPLD-36	9 - 5	47	47-47.4	15	57/50	19-32	50	62
	PG 42	DASCPLD-42	11 - 7	54	54-54.4	15	64/62	28-38	57	62
	PG 48	DASCPLD-48	15 - 8	59.3	59.3-59.7	15	70/65	34-44	64	62

Brass cable glands

PG connection thread

DBSCP

This product is similar to the DASCPC when it comes to consistency and reliability . However , it comes with a fixed plastic clamping device allowing it more applications and usage . Clamping units and pieces are made to allow it on to large cable cross sections with ease .



Technical Data	Temperature range	Protection class	Material
DBSCP	-30°C to +100°C	IP 68-5 bar	Body : Nickel-plated brass Insert : Polyamide Sealing Ring : Neoprene O-ring : Perbunan

Seal hole	Threaded Entry PG	Cat . No	Thread O.D. PG	Panel Mounting Hole	Thread Length D	Spanner Size A & F	Clamping Rang mm	Wrench Size mm	C mm
	PG 21	DBSCPNN-21	28.3	28.3-28.7	7	32/32	16-20	32	28.5
	PG 29	DBSCPNN-29	37	37-37.4	8	41/41	25-29.5	46	36.2

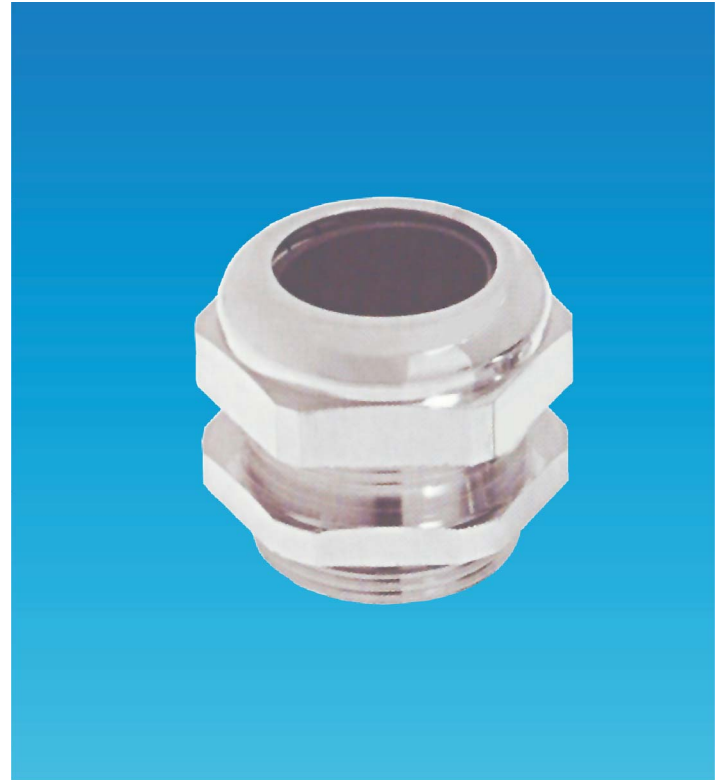
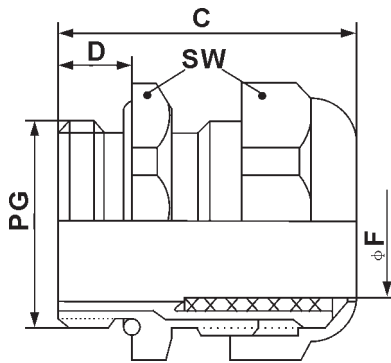
Seal hole	Threaded Entry PG	Cat . No	Cable Range ϕ	Thread O.D. PG	Panel Mounting Hole	Thread Length D	Spanner Size A & F	Clamping Rang mm	Wrench Size mm	C mm
	PG 21	DBSCPYP2D-21	8-4	28.3	28.3-28.7	7	32/32	16-20	32	28.5
	PG 29	DBSCPYP2D-29	12 - 6	37	37-37.4	8	41/41	25-29.5	46	36.2

Seal hole	Threaded Entry PG	Cat . No	Cable Range ϕ	Thread O.D. PG	Panel Mounting Hole	Thread Length D	Spanner Size A & F	Clamping Rang mm	Wrench Size mm	C mm
	PG 21	DBSCPYP3D-21	6 - 3	28.3	28.3-28.7	7	32/32	16-20	32	28.5
	PG 29	DBSCPYP3D-29	11 - 5	37	37-37.4	8	41/41	25-29.5	46	36.2

PG connection thread

DBSCP

This product is similar to the DASCPC when it comes to consistency and reliability . However , it comes with a fixed plastic clamping device allowing it more applications and usage . Clamping units and pieces are made to allow it on to large cable cross sections with ease .



Technical Data	Temperature range	Protection class	Material
DBSCP	-30°C to +100°C	IP 68-5 bar	Body : Nickel-plated brass Insert : Polyamide Sealing Ring : Neoprene O-ring : Perbunan

Seal hole	Threaded Entry PG	Cat . No	Cable Range ϕ	Thread O.D. PG	Panel Mounting Hole	Thread Length D	Spanner Size A & F	Clamping Rang mm	Wrench Size mm	C mm
	PG 21	DBSCP4D-21	8-4	28.3	28.3-28.7	7	32/32	16-20	32	28.5
	PG 29	DBSCP4D-29	11 - 6	37	37-37.4	8	41/41	25-29.5	46	36.2

Seal hole	Threaded Entry PG	Cat . No	Cable Range ϕ	Thread O.D. PG	Panel Mounting Hole	Thread Length D	Spanner Size A & F	Clamping Rang mm	Wrench Size mm	C mm
	PG 21	DBSCP5D-21	4.5 - 2	28.3	28.3-28.7	7	32/32	16-20	32	28.5
	PG 29	DBSCP5D-29	10 - 3.5	37	37-37.4	8	41/41	25-29.5	46	36.2

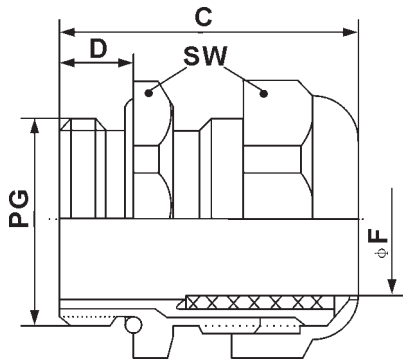
Seal hole	Threaded Entry PG	Cat . No	Cable Range ϕ	Thread O.D. PG	Panel Mounting Hole	Thread Length D	Spanner Size A & F	Clamping Rang mm	Wrench Size mm	C mm
	PG 21	DBSCP6D-21	7 - 3	28.3	28.3-28.7	7	32/32	16-20	32	28.5
	PG 29	DBSCP6D-29	9 - 5	37	37-37.4	8	41/41	25-29.5	46	36.2

Brass cable glands

PG connection thread

DBSCP

This product is similar to the DASCPC when it comes to consistency and reliability . However , it comes with a fixed plastic clamping device allowing it more applications and usage . Clamping units and pieces are made to allow it on to large cable cross sections with ease .



Technical Data	Temperature range	Protection class	Material
DBSCP	-30°C to +100°C	IP 68-5 bar	Body : Nickel-plated brass Insert : Polyamide Sealing Ring : Neoprene O-ring : Perbunan

Seal hole	Threaded Entry PG	Cat . No	Cable Range ϕ	Thread O.D. PG	Panel Mounting Hole	Thread Length D	Spanner Size A & F	Clamping Rang mm	Wrench Size mm	C mm
	PG 21	DBSCP7D-21	4 - 2	28.3	28.3-28.7	7	32/32	16-20	32	28.5
	PG 29	DBSCP7D-29	6 - 3	37	37-37.4	8	41/41	25-29.5	46	36.2

Seal hole	Threaded Entry PG	Cat . No	Cable Range ϕ	Thread O.D. PG	Panel Mounting Hole	Thread Length D	Spanner Size A & F	Clamping Rang mm	Wrench Size mm	C mm
	PG 21	DBSCP8D-21	3.5 - 1.5	28.3	28.3-28.7	7	32/32	16-20	32	28.5
	PG 29	DBSCP8D-29	7 - 3	37	37-37.4	8	41/41	25-29.5	46	36.2

Seal hole	Threaded Entry PG	Cat . No	Cable Range ϕ	Thread O.D. PG	Panel Mounting Hole	Thread Length D	Spanner Size A & F	Clamping Rang mm	Wrench Size mm	C mm
	PG 21	DBSCPLD-21	5 - 2	28.3	28.3-28.7	7	32/32	16-20	32	28.5
	PG 29	DBSCPLD-29	6.5 - 4	37	37-37.4	8	41/41	25-29.5	46	36.2